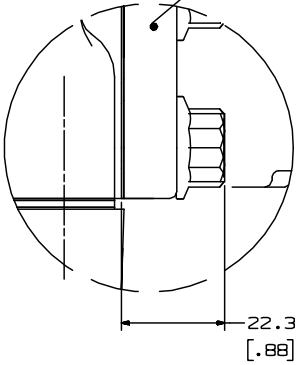
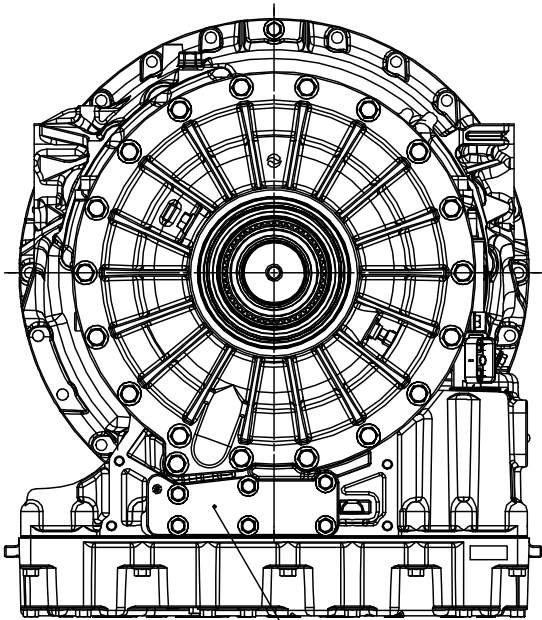
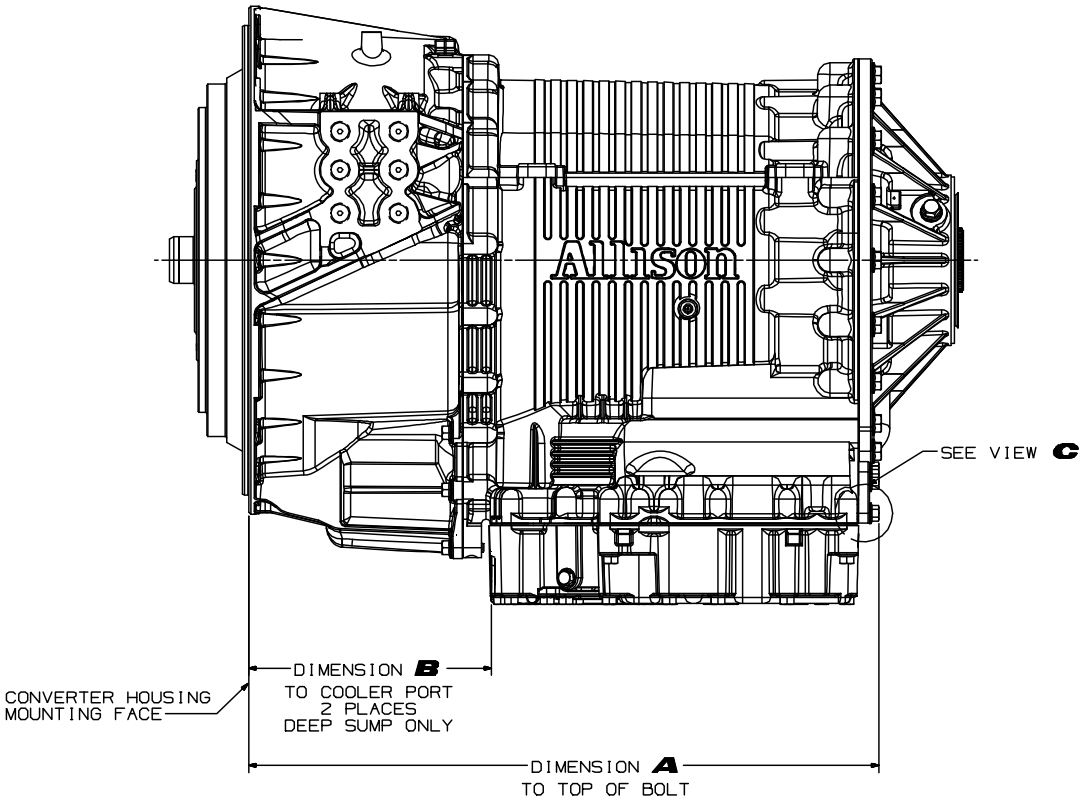
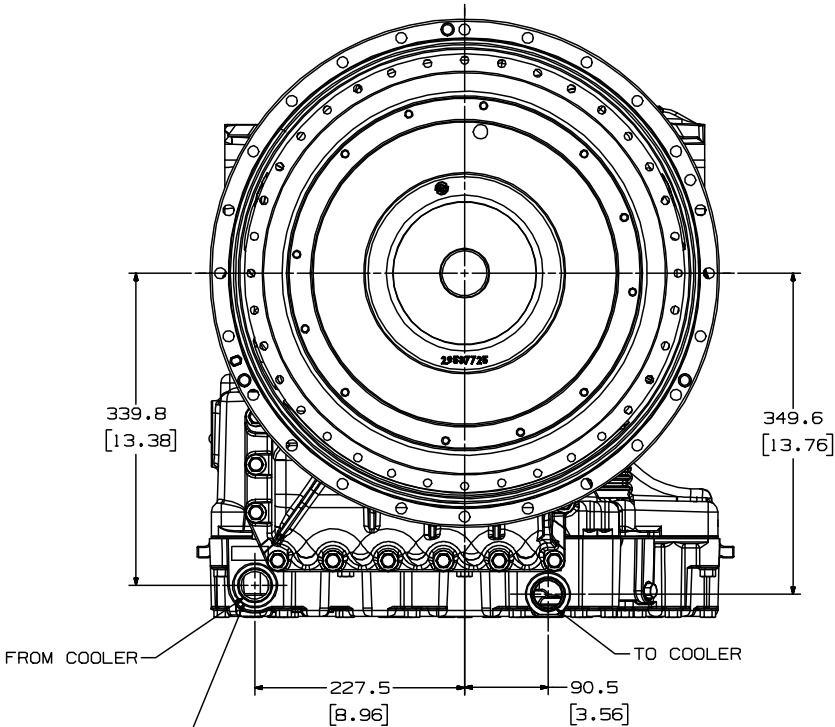


TRANSMISSION CONFIGURATION				
	6-SPD WITH PTO	6-SPD NO PTO	7-SPD WITH PTO	7-SPD NO PTO
DIMENSION <b>A</b>	757.2 (29.81)	684.2 (26.94)	943.1 (37.13)	870.1 (34.26)
DIMENSION <b>B</b>	336.1 (13.23)	263.1 (10.36)	522.0 (20.55)	449.0 (17.68)

FRONT COOLER PORTS



COOLER RETURN LOCATION

FRONT COOLER PORTS  
AVAILABLE ONLY ON DEEP SUMP

SOCIETY OF AUTOMOTIVE ENGINEERS  
1.3125 STRAIGHT THREAD  
O-RING CONNECTION INCH SERIES THREAD  
TORQUE COOLER FITTINGS TO  
88-110 N·m [65-81 LB-FT]

FOR EXTERNAL HYDRAULIC CIRCUIT REQUIREMENTS  
NOT SHOWN SEE 4000 PRODUCT FAMILY  
TRANSMISSION DATA SECTION.

"TWO WRENCH" INSTALLATION METHOD IS RECOMMENDED WHEN ATTACHING HOSES  
TO TRANSMISSION FITTINGS TO PREVENT ADDITIONAL ROTATION OF THE TRANSMISSION  
FITTING, LEADING TO AN OVERTORQUE CONDITION.

TORQUES SHOWN ARE FOR PLAIN (NON-PLATED) FASTENERS AND OTHER  
THREADED COMPONENTS SUPPLIED AND INSTALLED BY THE VEHICLE BUILDER.  
TORQUE REQUIREMENTS SHOULD BE REVIEWED IF PLATE FASTENERS WILL BE USED.  
CONSULT THE SUPPLIER.

FOR TRANSMISSION INSTALLATION DATA NOT SHOWN, SEE AS66-416 DRAWING.

F	(1)UPDATED CONVERTER HSG TO THE LATEST HARDWARE	16JL18 RH/JC
E	(1)UPDATED BREATHER TO THE LATEST HARDWARE	22AU17 RH/JH
D	(1)SEE SHEET 2	07NO16 RH/JH
C	(1)ADDED "FRONT COOLER PORTS" HEADER (2)REMOVED "ALLISON 4TH GENERATION..." BLOCK (3)REVISED TITLE BLOCK "COOLER PORTS, NON-RETARDER" WAS "FRONT COOLER PORT PROVISION" (4)REMOVED "PARTS SHOWN IN PHANTOM..." NOTE (5)ADDED "FOR TRANSMISSION INSTALLATION..." NOTE (6)ADDED SHEET 2 "REAR COOLER PORTS"	31OC16 RH/JH
B	(1)UPDATED TO SHOW NEW COVER PLATE AND BOLTS (2)DIMENSION A WAS 752.0 (29.61), 679.0 (26.73), 973.6 (38.33), 900.6 (35.46) (3)SUPPLIED AND INSTALLED BY THE VEHICLE BUILDER WAS CUSTOMER FURNISHED (4)ADDED NOTE: TORQUES SHOWN ARE FOR PLAIN FASTENERS... (5)88-110 N·m (65-81 LB-FT) WAS 54-68 N·m (40-50 LB-FT) (6)4000 PRODUCT FAMILY TRANSMISSION DATA SECTION WAS "TRANSMISSION SPECIFICATIONS" SECTION OF 4000 PRODUCT FAMILY TECH DATA	15MY08 MT/MF
A	REVISED CALLOUT "COOLER RETURN" WAS "TO COOLER" UPDATED TO LATEST HARDWARE	17AU06 RH/WF
REV	DESCRIPTION	DATE
FR2	REVISIONS	

NX	FR2
SPECIFIED DIMENSIONS HAVE PRECEDENCE OVER COMPUTER GENERATED DATA	
CHANGE RESTRICTED	
METRIC	
THIRD ANGLE	
THE INFORMATION CONTAINED HEREIN IS PROPRIETARY AND THE PROPERTY OF ALLISON TRANSMISSION, INC. AND MAY NOT BE REPRODUCED, DISCLOSED OR USED FOR ANY PURPOSE OTHER THAN A QUOTATION TO OR ON ORDER FROM ALLISON TRANSMISSION, INC. WITHOUT THE SPECIFIC WRITTEN AUTHORIZATION OF ALLISON TRANSMISSION, INC.	

DIMENSIONS SHOWN IN PARENTHESES ARE  
IN INCHES, AND FOR REFERENCE ONLY

FR1	DWG. NO.	AS67-474	LTR SH	F 1
-----	----------	----------	--------	-----

INSTL DWG, REMOTE COOLER  
PORT PROVISION

MODEL 4000 PRODUCT FAMILY  
SIZE/CAGE CODE/DWG NO  
R 73342 AS67-474

SCALE NONE  
CURRENT STATUS:  
RX-Released - EXP

