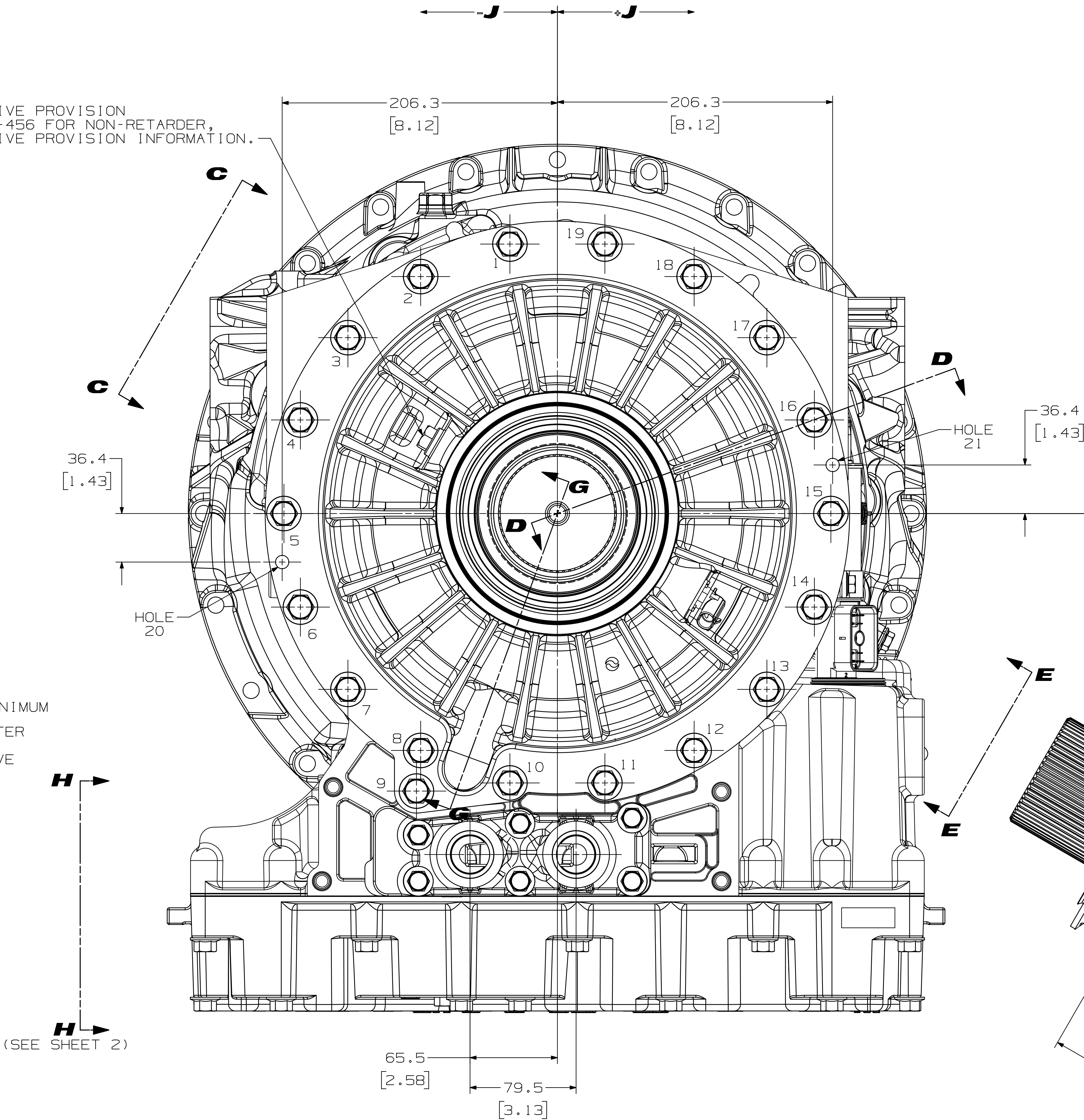


REAR COVER ASSEMBLY HOLE COORDINATES ALL DIMS ARE BASIC			PROVISION FOR LOCATOR PINS TO CENTER TRANSFER CASE ADAPTER (EARLY DESIGN) ALL DIMS ARE BASIC		
HOLE NO	J DIM	K DIM	HOLE NO	J DIM	K DIM
1	-35.6 (1.40)	201.9 (7.95)	1	-206.3 (8.12)	-36.4 (1.43)
2	-102.5 (4.03)	177.5 (7.00)	2	206.3 (8.12)	36.4 (1.43)
3	-157.0 (6.18)	131.8 (5.19)			
4	-192.6 (7.58)	70.1 (2.76)			
5	-205.0 (8.07)	0.0 (0.00)			
6	-192.6 (7.58)	-70.1 (2.75)			
7	-157.0 (6.18)	-131.8 (5.19)			
8	-102.5 (4.03)	-177.5 (7.00)			
9	-105.6 (4.16)	-208.0 (8.19)			
10	-35.6 (1.40)	-201.9 (7.95)			
11	35.6 (1.40)	-201.9 (7.95)			
12	102.5 (4.03)	-177.5 (7.00)			
13	157.0 (6.18)	-131.8 (5.19)			
14	192.6 (7.58)	-70.1 (2.76)			
15	205.0 (8.07)	0.0 (0.00)			
16	192.6 (7.58)	70.1 (2.75)			
17	157.0 (6.18)	131.8 (5.19)			
18	102.5 (4.03)	177.5 (7.00)			
19	35.6 (1.40)	201.9 (7.95)			

TACHOGRAPH DRIVE PROVISION
REFER TO AS67-456 FOR NON-RETARDER,
TACHOGRAPH DRIVE PROVISION INFORMATION.



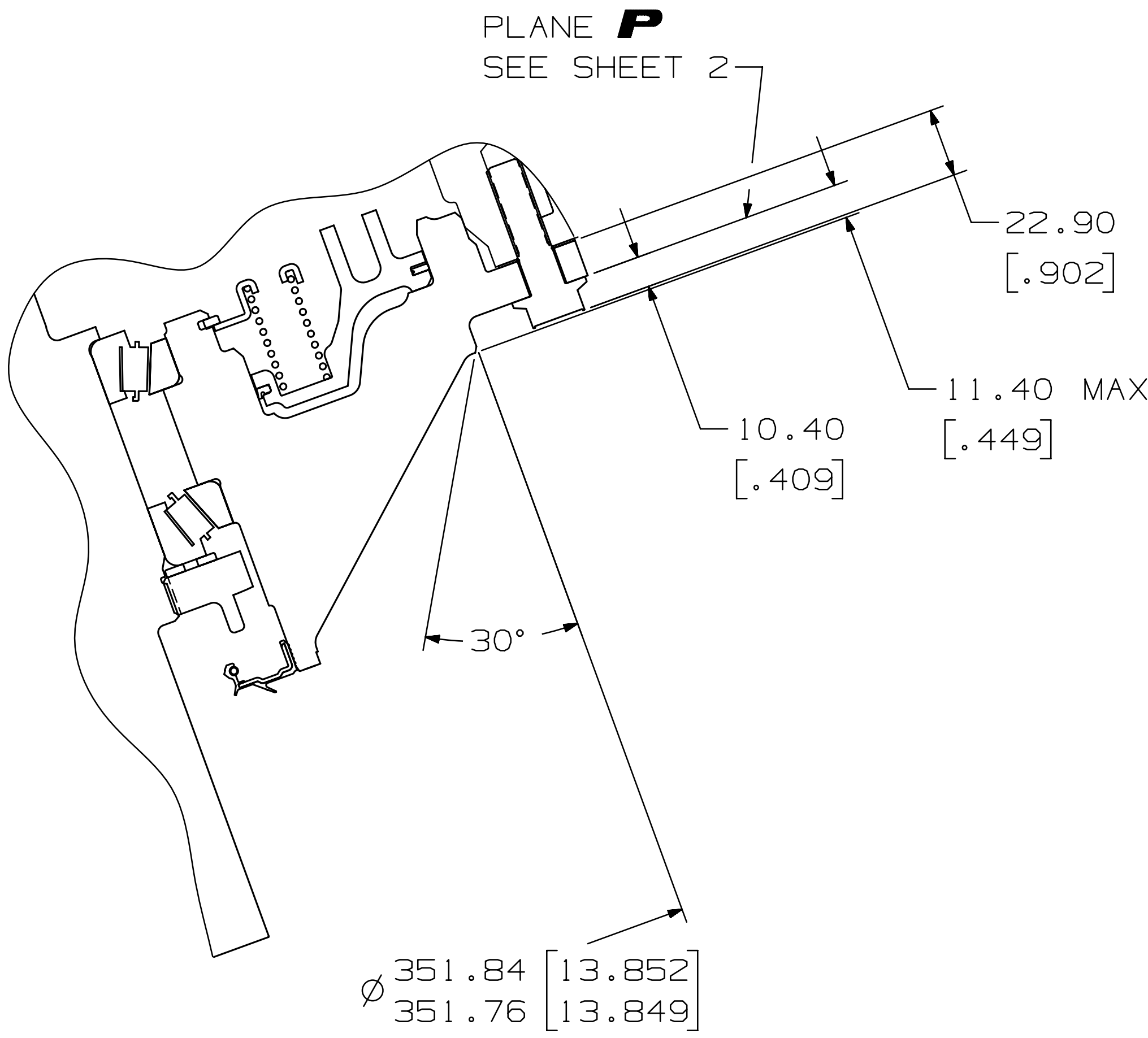
REAR VIEW OF TRANSMISSION
(7-SPEED MODEL SHOWN)

TRANSFER CASE ADAPTER REQUIREMENTS:

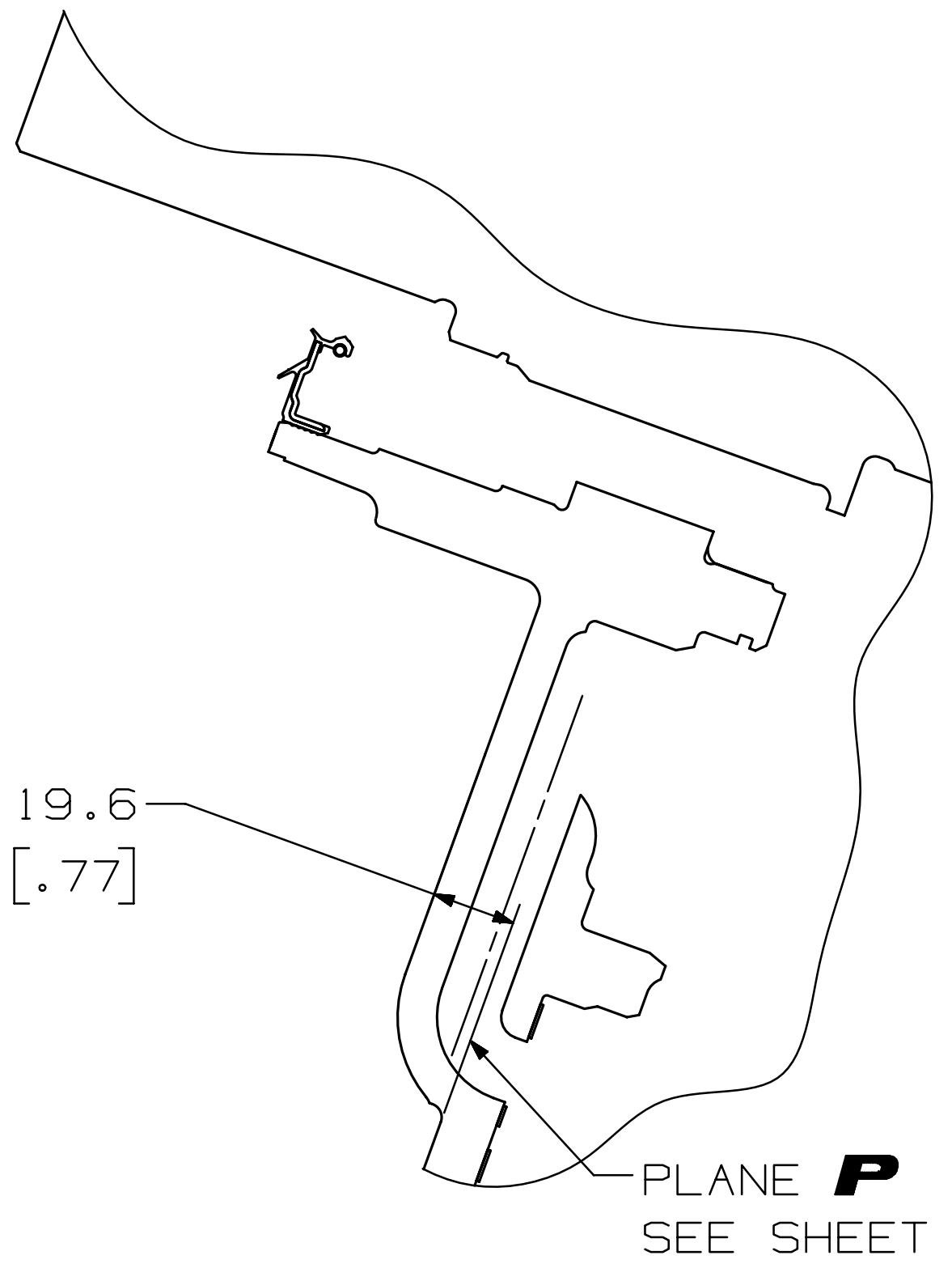
- (1) MUST INCLUDE A HOLE IN BOTTOM OF ADAPTER TO DRAIN ANY FLUID WHICH MAY LEAK INTO THIS AREA
- (2) AXIAL LENGTH OF ADAPTER IS NOT TO EXCEED 150.0 (5.90)
- (3) MAXIMUM DIAMETRAL SPACE CLAIM OF ANY PORTION OF ADAPTER MUST NOT EXCEED THAT OF THE MATING TRANSMISSION REAR COVER

FOR TRANSMISSION INSTALLATION DATA NOT SHOWN,
SEE DRAWING AS67-416 AND AS67-417.

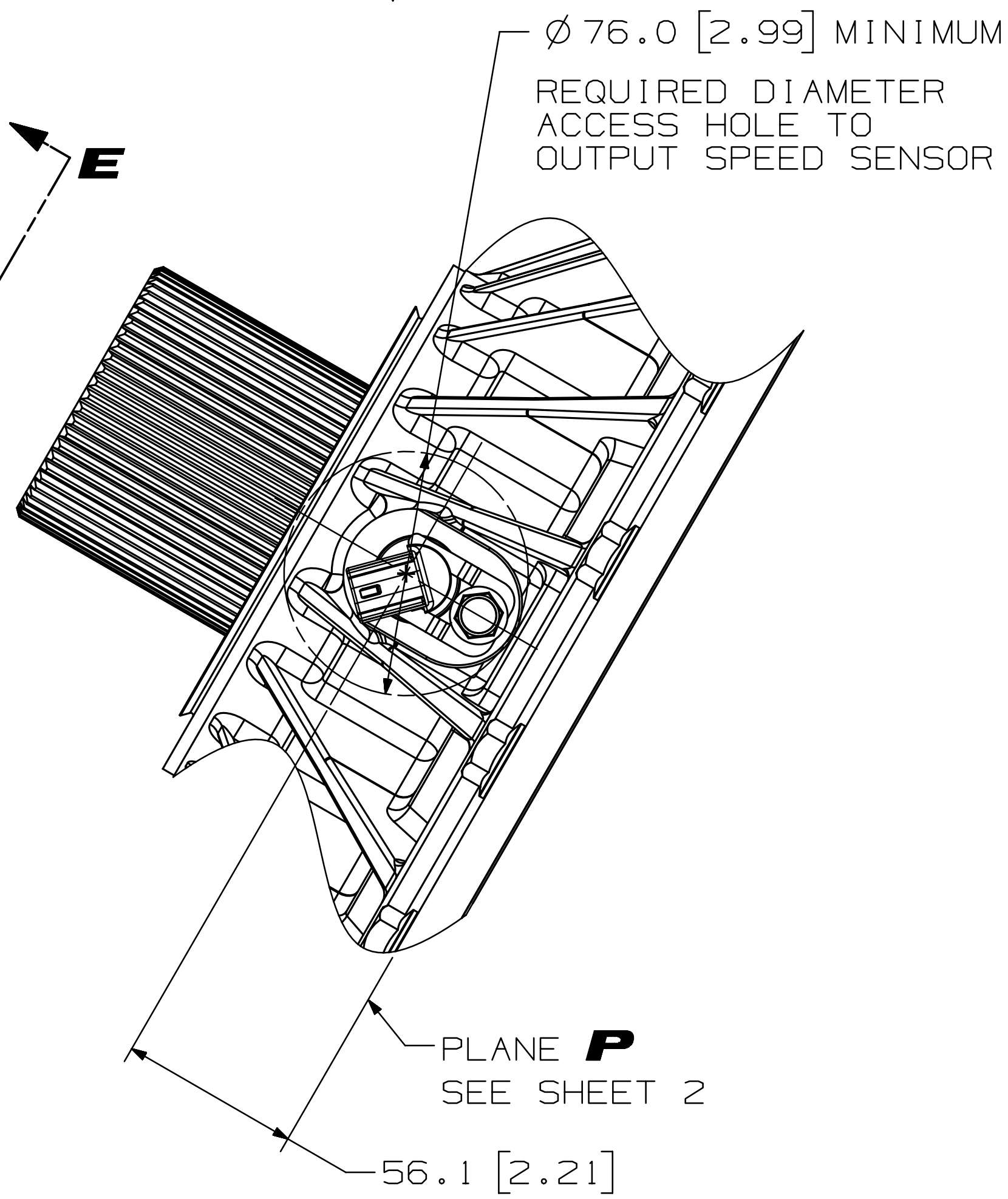
DIMENSIONS SHOWN IN [] BRACKETS ARE
IN INCHES, AND FOR REFERENCE ONLY



SECTION **D-D**
MACHINED PILOT FOR
CENTERING CUSTOMER FURNISHED
TRANSFER CASE ADAPTER



SECTION **G-G**



VIEW **E-E**

H	(1)REVISED DIMENSIONS SHOWN IN... " [] BRACKETS" WAS "PARENTHESES" (2,3)SEE SHEET 2	25SE25 RH/JC
G	(1)UPDATED TO THE LATEST CONVERTER HSG HARDWARE	14JN18 RH/JC
F	(1)UPDATED TO LATEST BREATHER HARDWARE (2-3)SEE SHEET 2	11MY17 RH/JH
E	(1)REMOVED "ALLISON 4TH GENERATION" BLOCK (2)ADDED NOTE "FOR TRANSMISSION DATA NOT SHOWN..." (3-8)SEE SHEET 2	04MY16 RH/JH
D	REVISED TITLE INSTALLATION DRAWING BLOCK "PROVISION FOR NON-ALLISON TRANSFER CASE" WAS "PROVISION FOR CUSTOMER FURNISHED DROPBOX" REVISED SECTION D-D "TRANSFER CASE" WAS "DROPBOX" REVISED "DROPBOX ADAPTER REQUIREMENTS:" WAS "TRANSFER CASE ADAPTER REQUIREMENTS:" REVISED DIM Ø 76.0 [2.99] "TACHOGRAPH DRIVE PROVISION" WAS "OUTPUT SPEED SENSOR" PROVISION FOR LOCATOR BLOCK "TRANSFER CASE" WAS "DROPBOX" SEE SHEET 2 AND 3	22MY07 RH/WF 03OC09 MD/WF 01FE05 MD/WF
C	(1-2)SEE SHEET 2	03OC09 MD/WF
B	(1)UPDATED VIEWS	01FE05 MD/WF
A	(1)REMOVED REAR BRACKET IN CENTER REAR VIEW (2)ENLARGED CENTER REAR VIEW (3)ADDED 12.5 [49] DIMENSION IN SECTION VIEW D-D	13N003 JTDN DATE DW/CHK

FR2	REV	DESCRIPTION
DRAWN R. DECASTRO DATE 16OC03 CHECKED J. FISHER DATE 22OC03 APPROVED C. REYES DATE 27OC03 PROJ. ENGR. DATE APPL. ENGR. J. FISHER DATE 22OC03		
CHANGING RESTRICTED		
METRIC		
THIRD ANGLE		

Allison Transmission Indianapolis, Indiana, USA	
INSTL DWG, PROV FOR NON-ALLISON TRFR CASE	
MODEL 4000 PRODUCT FAMILY	
SIZE CASE CODE DWG NO R 73342 AS67-445	
SCALE NONE	
CURRENT STATUS: VA-Validate	
SHEET 1 OF 2	

FR1	DWG. NO. AS67-445	LTR SH H 1
-----	----------------------	---------------

